

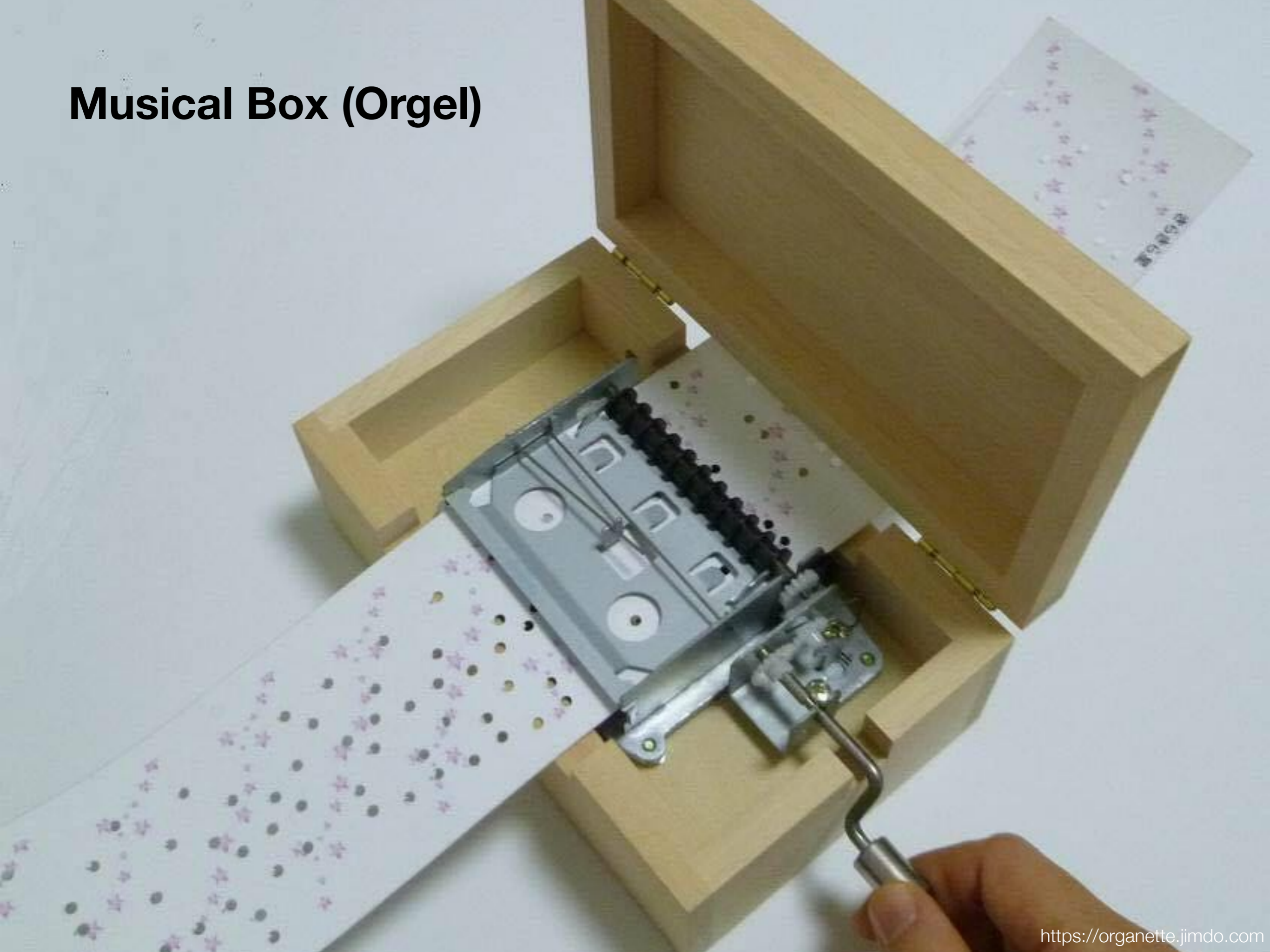
Mid term presentation

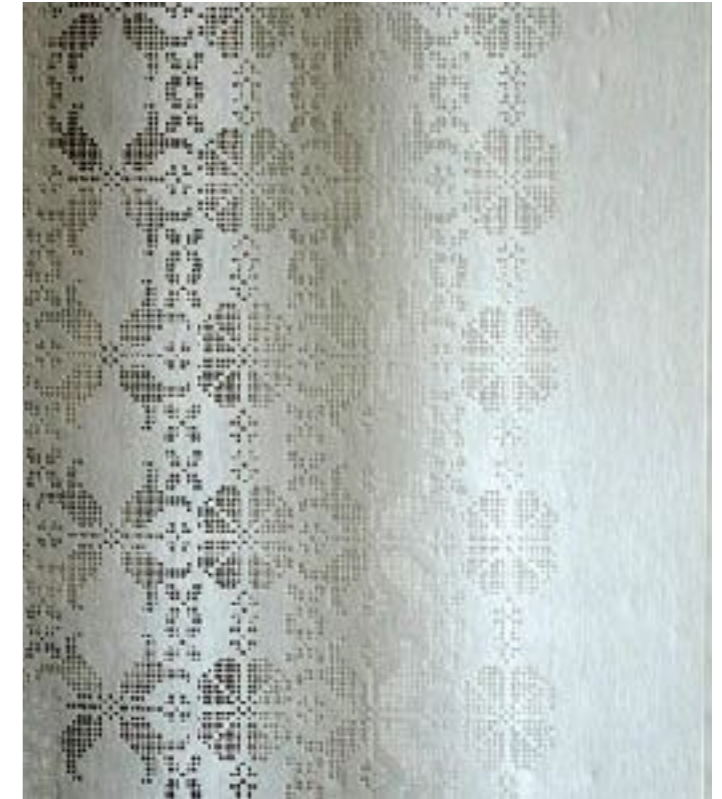
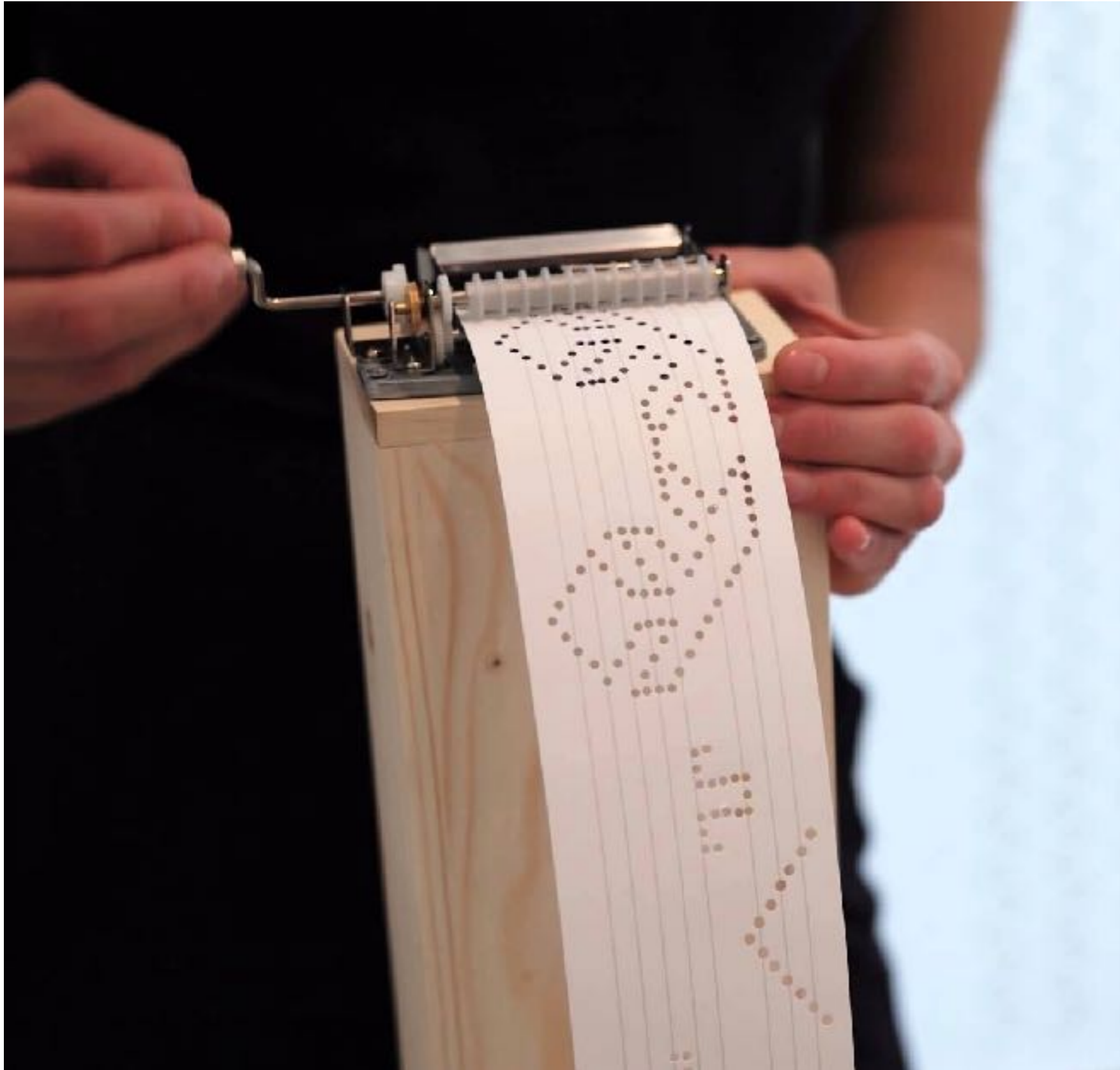
Hiroki Kaimoto -BHA5 Japan-

Hols of worm-eaten



Musical Box (Orgel)



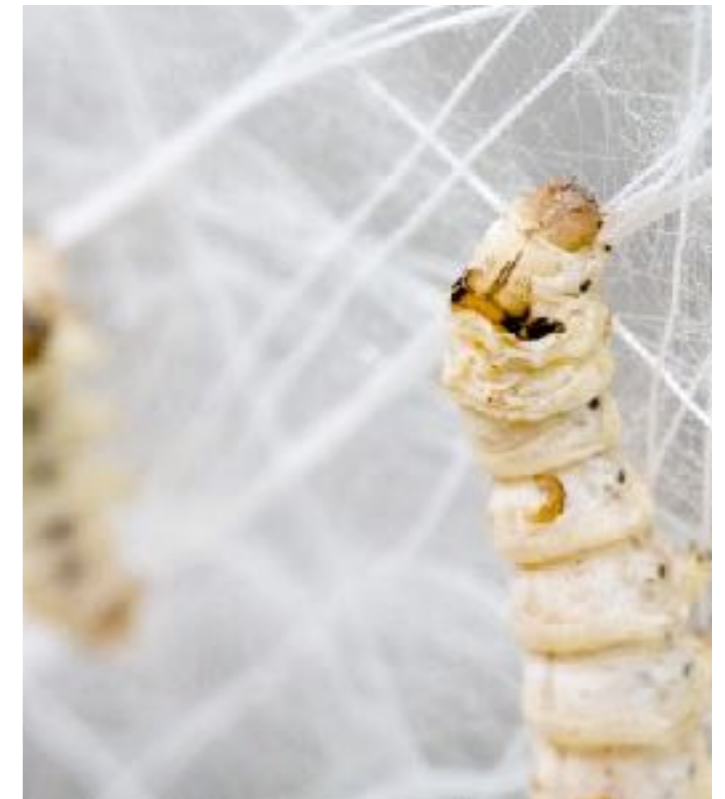


Soundweaving (2014) : Zsanett Szirmay

<http://soundweaving.mome.hu/en/>

Hols of worm-eaten





Silk Pavilion (2013): MIT Media Lab

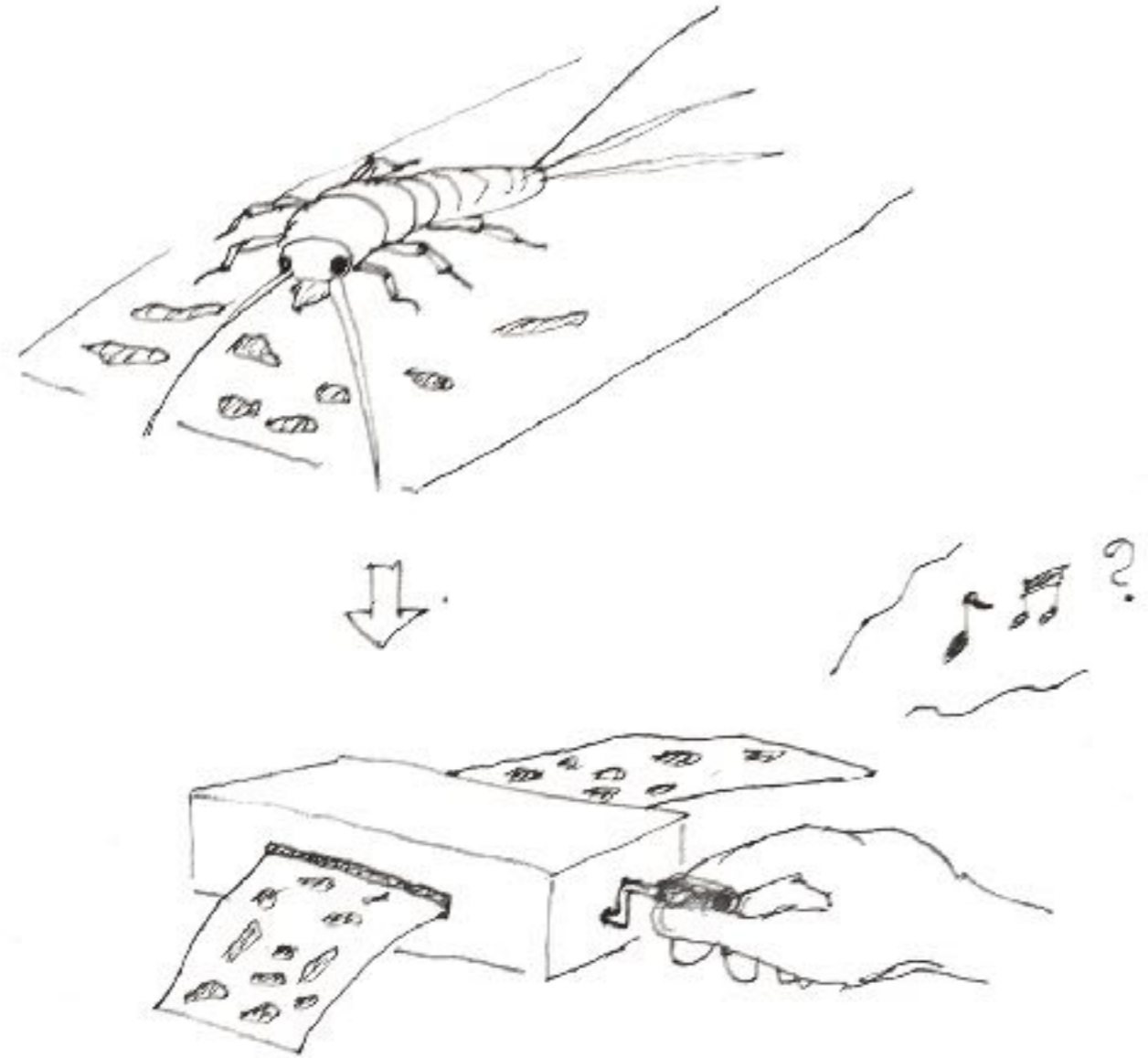
<http://matter.media.mit.edu/environments/details/silk-pavillion#prettyPhoto>

紙魚simi (Bookworm)



Approach

- Put on the component which affect their Behavior
 - Lavender' Smell (dislike)
 - Starch component (like)
- Mapping Light/heat (They are Nocturnal)



Thank you